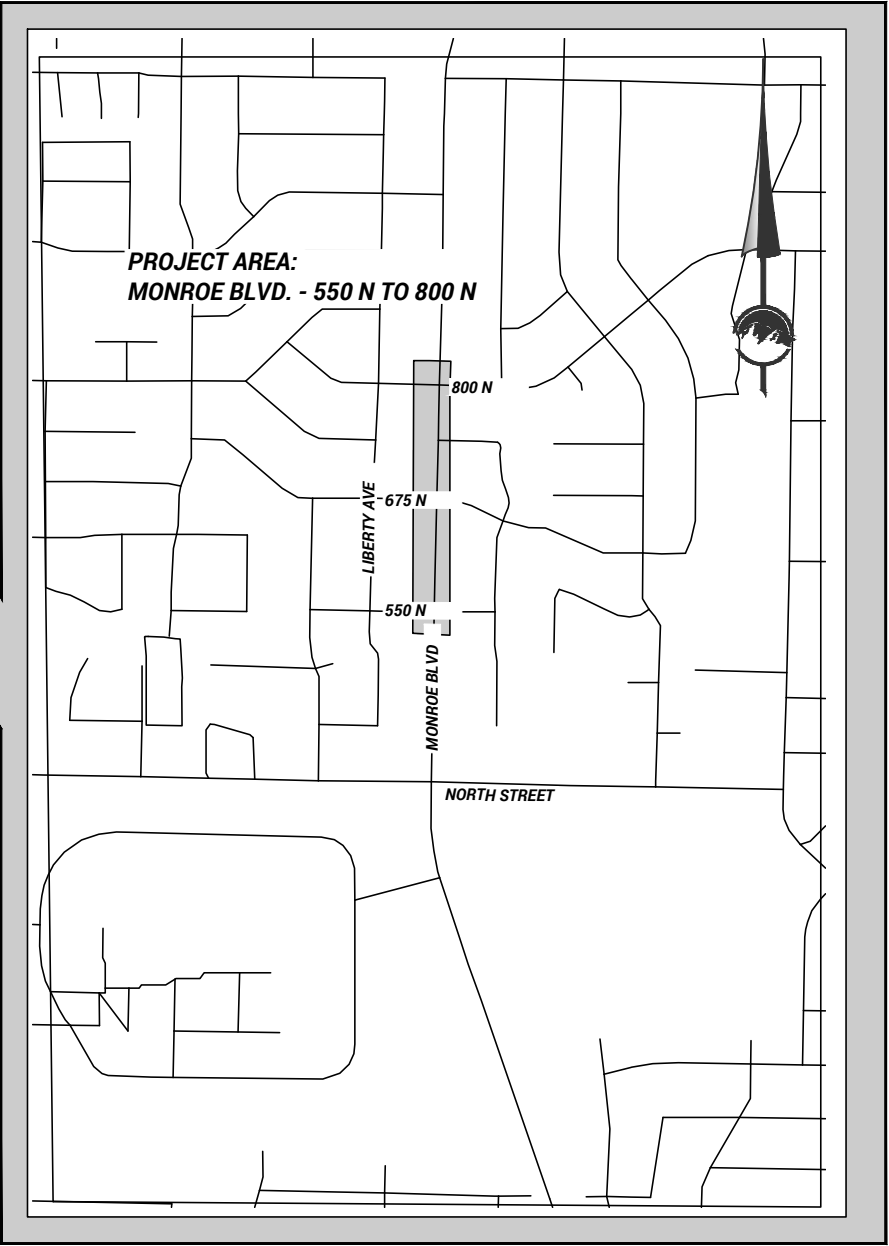
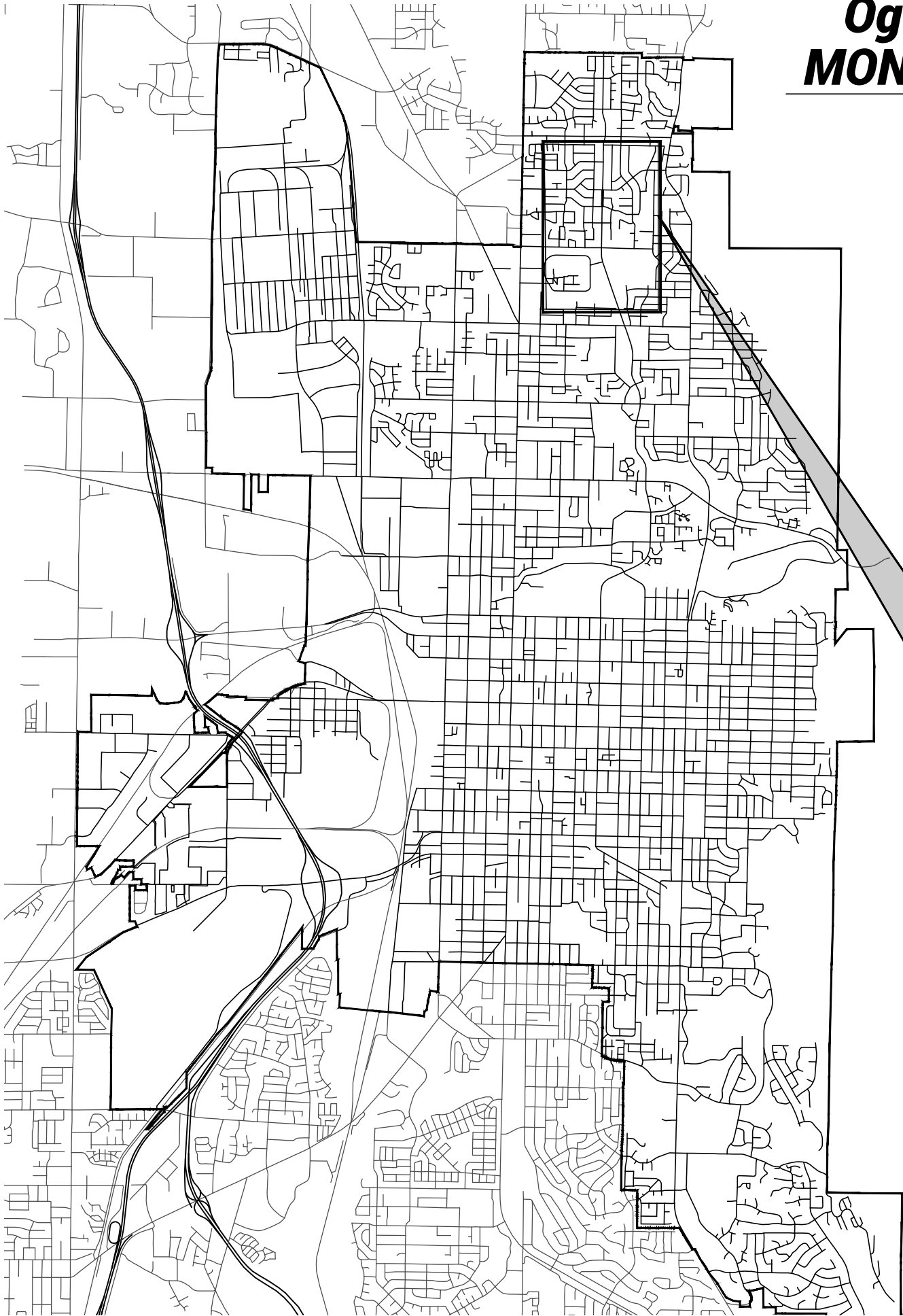


Ogden City Engineering  
MONROE WATER LINE PH I  
550 N TO 800 N



SHEET INDEX

1	G1	TITLESHEET
2	SC1	SURVEY CONTROL
3	W1	WATER LINE PLAN & PROFILE
4	W2	WATER LINE PLAN & PROFILE
5	W3	WATER LINE PLAN & PROFILE
6	SD1	STORM DRAIN PLAN & PROFILE
7	RD1	ROADWAY PLAN & PROFILE
8	RD2	ROADWAY PLAN & PROFILE
9	RD3	ROADWAY PLAN & PROFILE
10	DT1	DETAILS
11	DT2	DETAILS

TITLESHEET

MONROE WATER LINE PH I  
550 N TO 800 N

DESIGNED  
DRAWN  
CHECKED

B/M  
B/M  
TDN

DATE  
6/1/2023

DRAWING SCALE  
H: NONE (22x34)  
V: NONE (11x17)

This bar measures  
on the original drawing



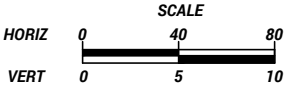
REV	DATE	DESCRIPTION
0		MODIFY DESCRIPTION

SHEET	REVISION
1	0



NOTES:

1. THE HORIZONTAL DATUM TO BE USED IS THE NAD 83 STATE PLANE UTAH NORTH ZONE GRID
2. THE VERTICAL DATUM TO BE USED IS NAVD 88 USING GEOID 12A.
3. COORDINATE SETTING ALL MONUMENTS FOR THE PROJECT WITH THE CITY SURVEYOR STEVE PORTER 801-629-8979



SC1

0

2

REVISION

REV	DATE	DESCRIPTION
0	MM/DD/YY	DESCRIPTION

PROFESSIONAL ENGINEER

90000043-2203

BRADLEY

5/17/23

STATE OF UTAH

DESIGNED

B/M

DATE

5/19/2023

DRAWN

B/M

CHECKED

TDN

DRAWING SCALE

H: 1" = 20'

V: 1" = 5'

1" = 10'

1

2

3

4

5

6

7

8

9

10

11

12

13

14

15

16

17

18

19

20

21

22

23

24

25

26

27

28

29

30

31

32

33

34

35

36

37

38

39

40

41

42

43

44

45

46

47

48

49

50

51

52

53

54

55

56

57

58

59

60

61

62

63

64

65

66

67

68

69

70

71

72

73

74

75

76

77

78

79

80

81

82

83

84

85

86

87

88

89

90

91

92

93

94

95

96

97

98

99

100

SURVEY CONTROL

MONROE WATER LINE PH I

550 N TO 800 N

Ogden

UTAH

Still Untamed

2549 Washington Blvd, Suite 760 Ogden, UT 84401

Phone: 801-629-8980 engineering.ogdencity.com

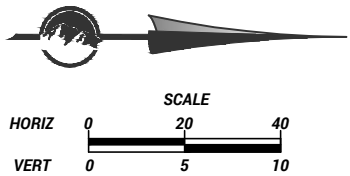
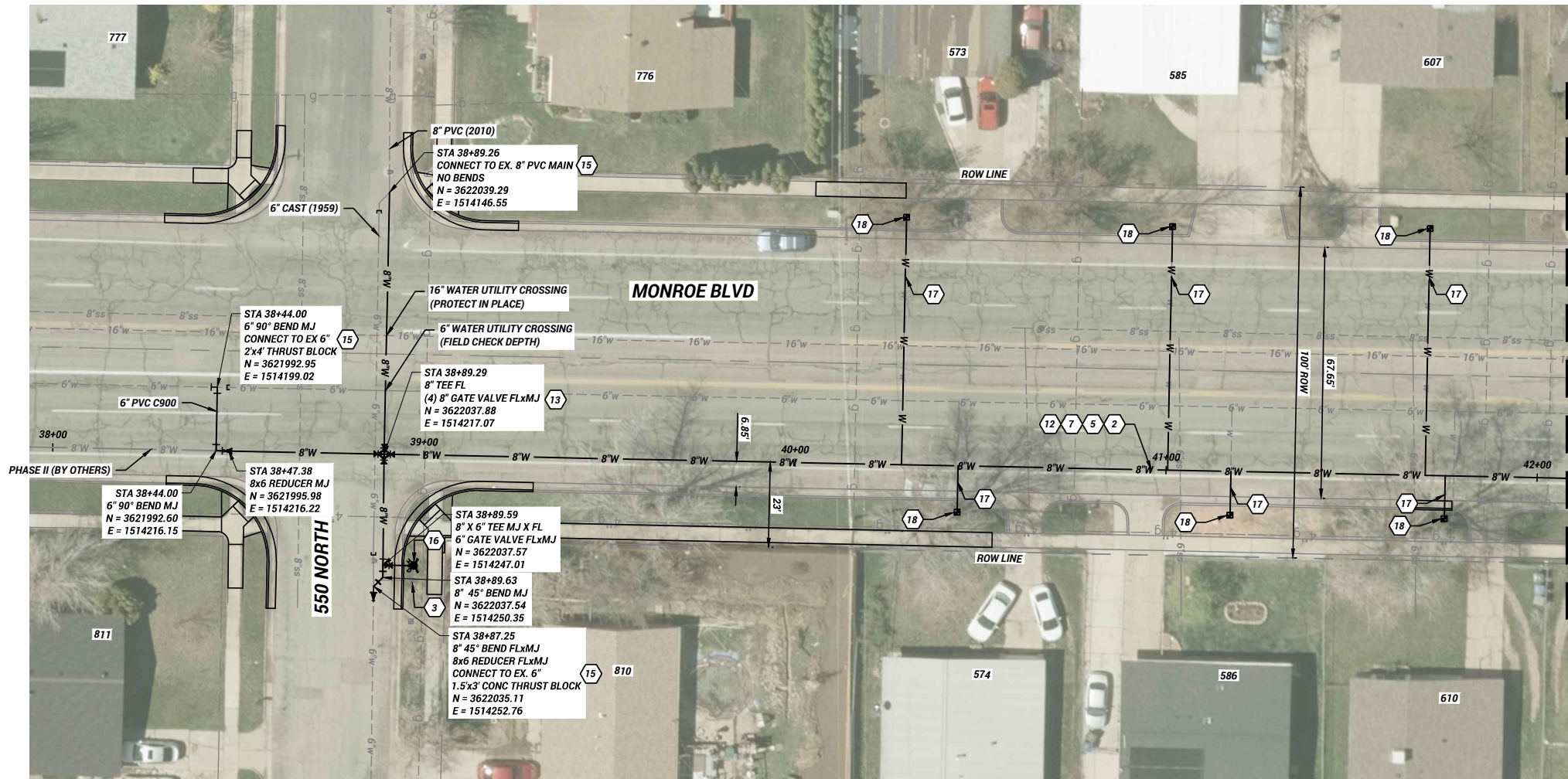
DRAWING NAME:

SC1\_Survey Control Monroe.dwg

PLOT DATE:

6/2/2023 2:19 PM



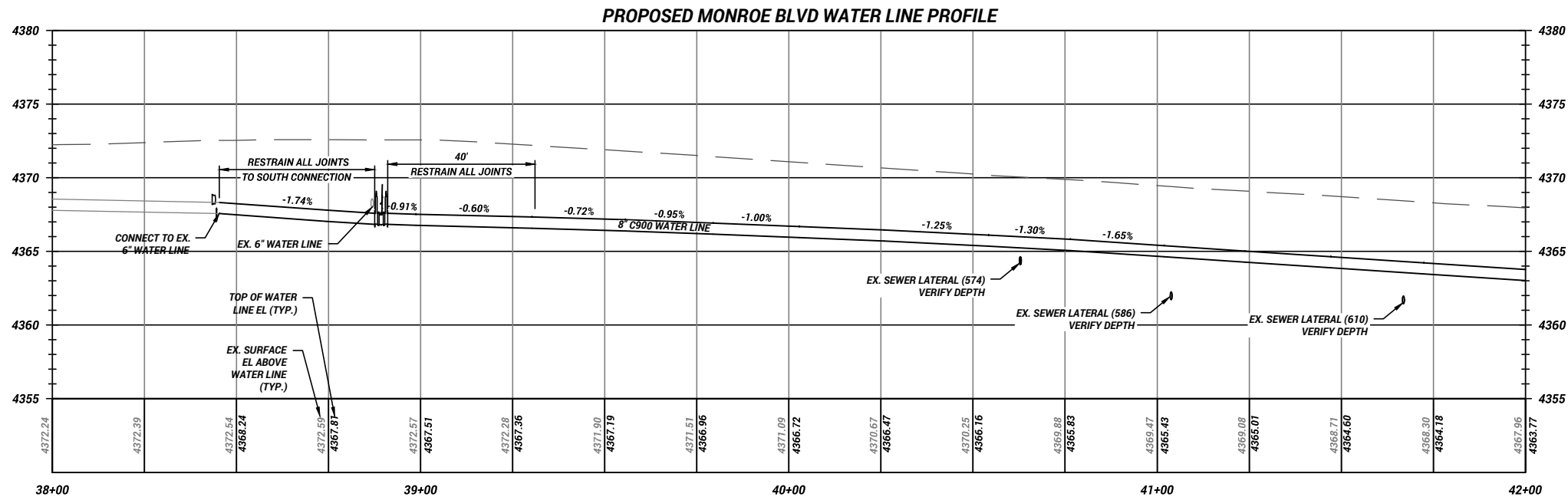


KEYED NOTES:

- 1 REMOVE AND REPLACE 30", TYPE "A" CONCRETE CURB AND GUTTER PER OGDEN STANDARDS.
- 2 REMOVE ASPHALT PAVEMENT
- 3 REMOVE FIRE HYDRANT ASSEMBLY. SALVAGE OLD FIRE HYDRANT TO OGDEN CITY WATER DEPARTMENT UPON REQUEST.
- 4 REMOVE VALVE BOX.
- 5 ROADBASE APWA (GRADE 1", 8" THICK) PER STD DWG RD-2
- 7 HMA T-PATCH PG 58-28 SP-1/2" CLASS II INSTALLATION, 6" THICK PER STD DWG RD-3. ENGINEER TO CONFIRM AND APPROVE MAXIMUM EXTENTS IN THE FIELD.
- 12 8" PVC C900 DR-18 WATER LINE
- 13 8" GATE VALVE (CLASS 250) PER STD DWG W-11, W-12
- 14 6" PVC C900 DR-18 WATER LINE
- 15 EXISTING WATER MAIN CONNECTION
- 16 FIRE HYDRANT ASSEMBLY PER OGDEN CITY STDS
- 17 1" AWWA C901 CTS POLY SERVICE LINE
- 18 1" WATER METER ASSEMBLY PER OGDEN CITY STDS

NOTES:

1. ALL EXISTING SEWER LATERALS CROSSING THE PROPOSED WATER MAIN SHALL BE LOCATED BY THE CONTRACTOR AND SHALL BE VIDEO INSPECTED BOTH BEFORE AND AFTER CONSTRUCTION OF THE WATER LINE (BEFORE PAVING).
2. RESTRAIN ALL PIPE JOINTS IN THE EAST/WEST DIRECTION AT LEAST 40 FT IN EACH DIRECTION FROM THE CROSS AT THE 550 NORTH CROSS.

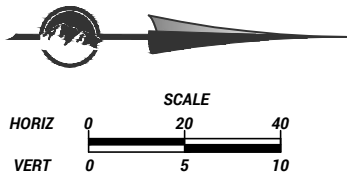
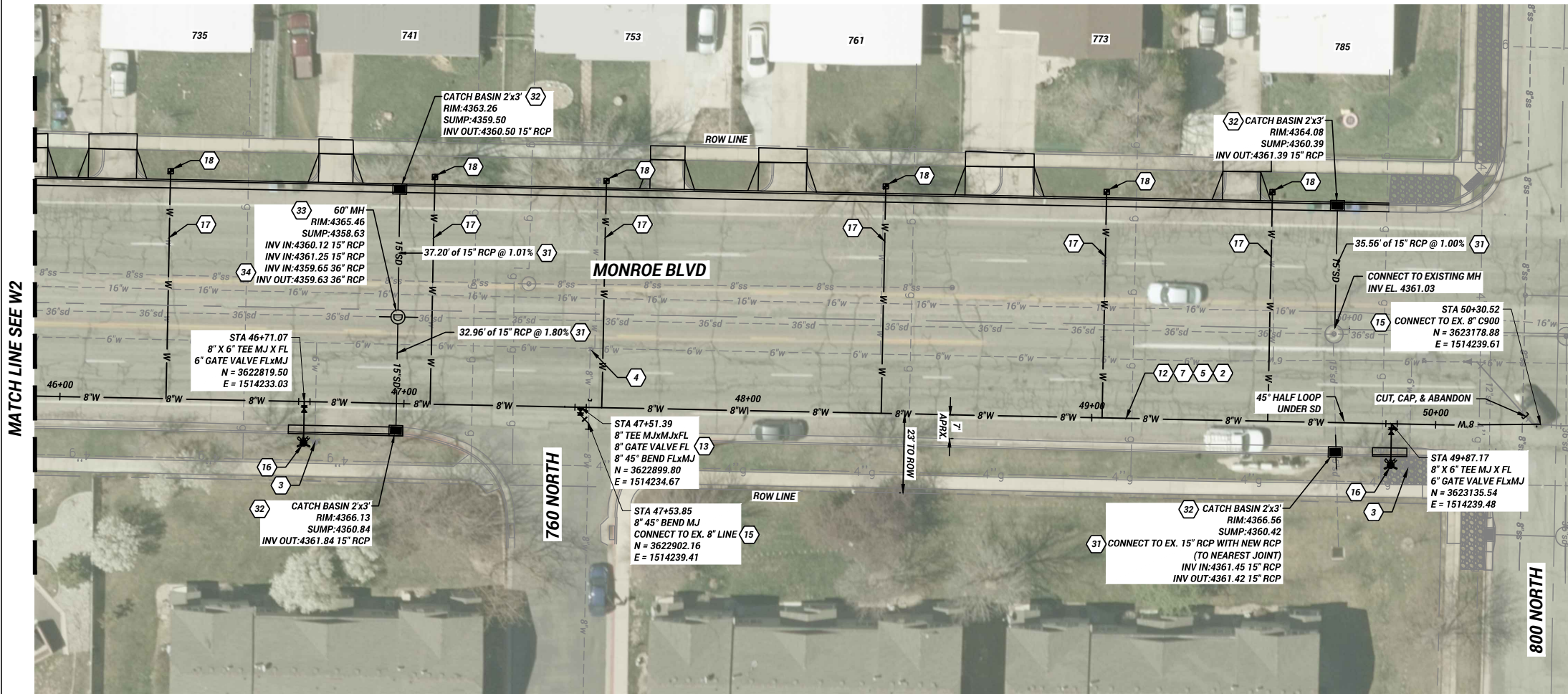


WATER LINE PLAN & PROFILE  
MONROE WATER LINE PH I  
550 N TO 800 N





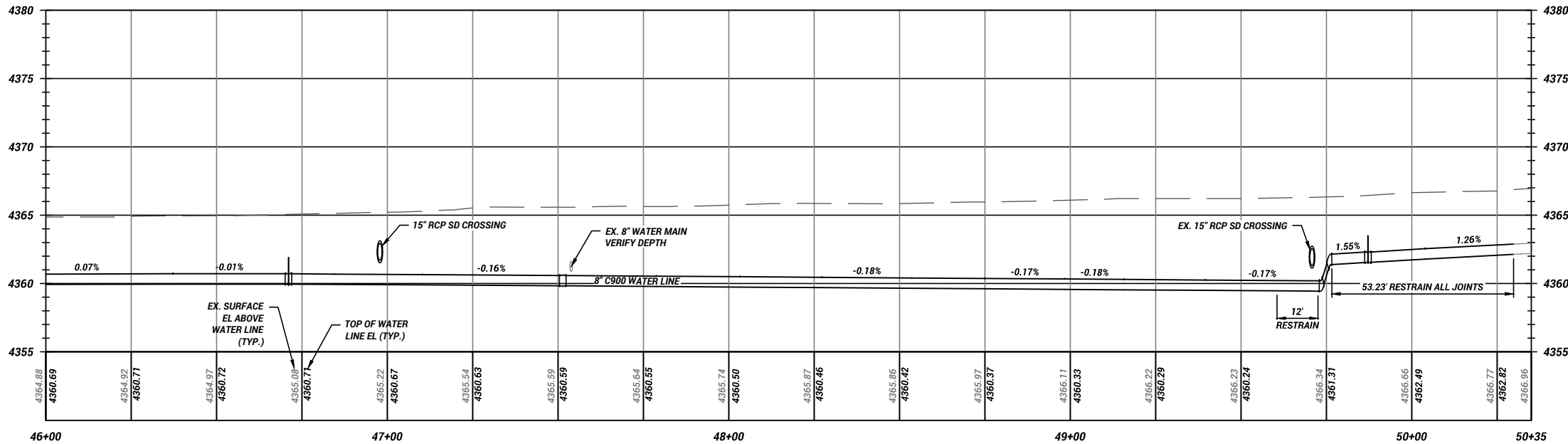




KEYED NOTES:

- 1 REMOVE AND REPLACE 30", TYPE "A" CONCRETE CURB AND GUTTER PER OGDEN STANDARDS.
- 2 REMOVE ASPHALT PAVEMENT
- 3 REMOVE FIRE HYDRANT ASSEMBLY. SALVAGE OLD FIRE HYDRANT TO OGDEN CITY WATER DEPARTMENT UPON REQUEST.
- 4 REMOVE VALVE BOX.
- 5 ROADBASE APWA (GRADE 1", 8" THICK) PER STD DWG RD-2
- 7 HMA T-PATCH PG 58-28 SP-1/2" CLASS II INSTALLATION, 6" THICK PER STD DWG RD-3. ENGINEER TO CONFIRM AND APPROVE MAXIMUM EXTENTS IN THE FIELD.
- 12 8" PVC C900 DR-18 WATER LINE
- 13 8" GATE VALVE (CLASS 250) PER STD DWG W-11, W-12
- 14 6" PVC C900 DR-18 WATER LINE
- 15 EXISTING WATER MAIN CONNECTION
- 16 FIRE HYDRANT ASSEMBLY PER OGDEN CITY STDS
- 17 1" AWWA C901 CTS POLY SERVICE LINE
- 18 1" WATER METER ASSEMBLY PER OGDEN CITY STDS
- 31 15" CLASS V RCP STORM DRAIN
- 32 2x3' PRECAST CATCH BASIN WITH CURB INLET GRATE
- 33 60" PRECAST STORM DRAIN MANHOLE
- 34 36" CLASS III RCP STORM DRAIN (CONNECT TO EXISTING, TO THE NEAREST PIPE JOINT)

PROPOSED MONROE BLVD WATER LINE PROFILE



W3

0

5

REV	DATE	DESCRIPTION
0	MM/DD/YY	DESCRIPTION

PROFESSIONAL ENGINEER

BRADLEY

5/17/2023

STATE OF UTAH

DESIGNED	DRAWN	CHECKED	TDN

DATE	5/8/2023
DRAWING SCALE	H: 1" = 20' (22x34) V: 1" = 40' (11x17) 1" = 5' (22x34) 1" = 10' (11x17)

WATER LINE PLAN & PROFILE

MONROE WATER LINE PH I

550 N TO 800 N

Ogden

UTAH

Still Untamed™

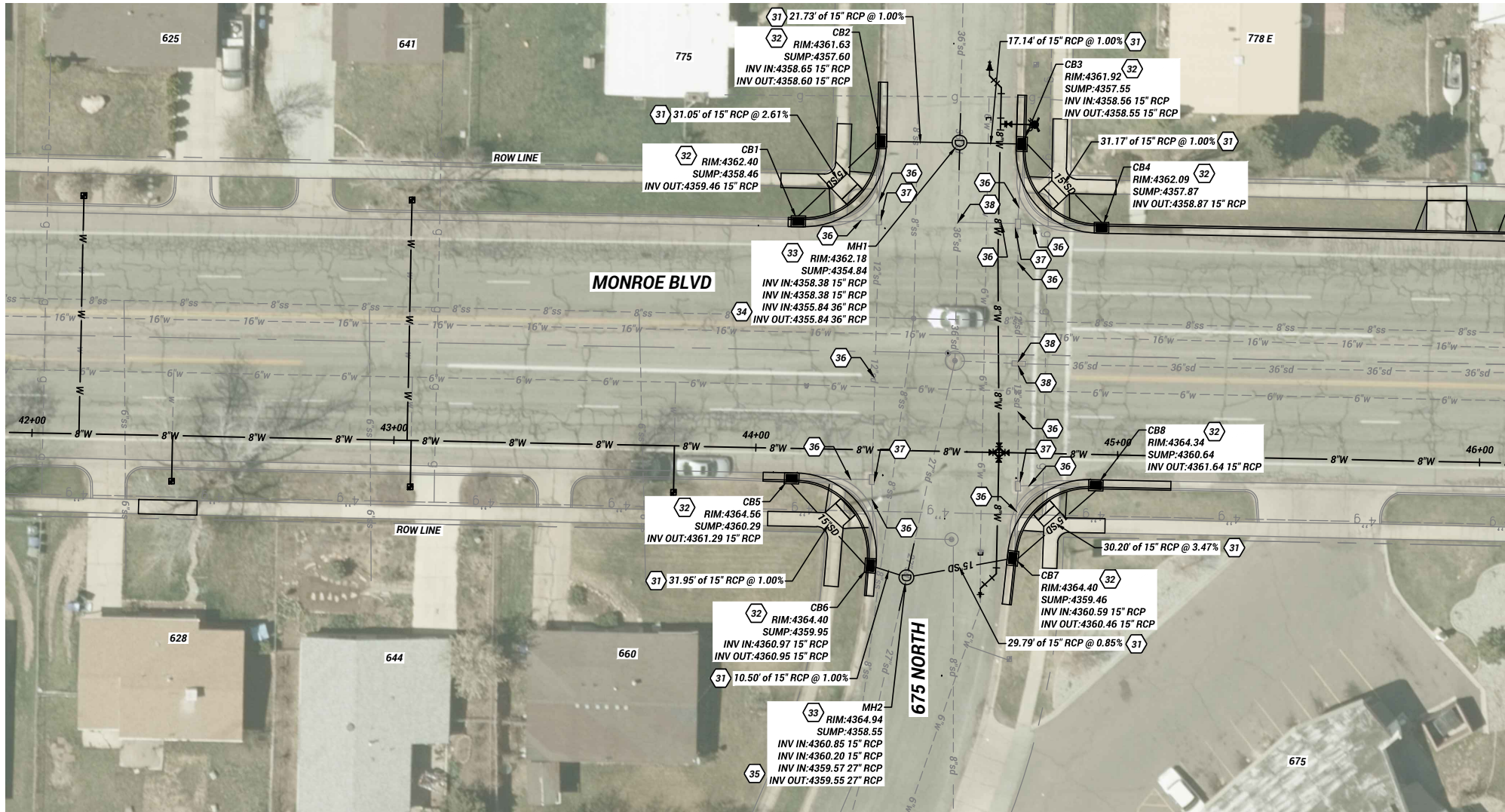
2549 Washington Blvd, Suite 760 Ogden, UT 84401

Phone: 801-629-8980 engineering.ogdencity.com

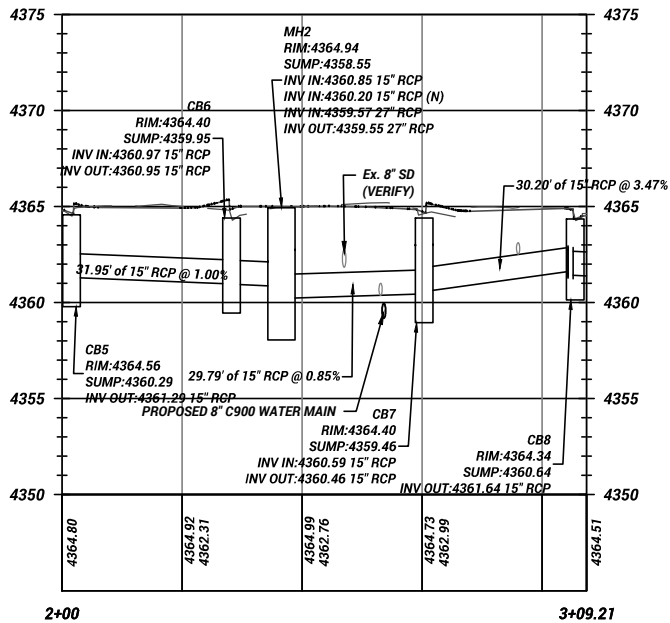
PLOT DATE: 6/2/2023 2:19 PM

DRAWING NAME: Monroe W1x.dwg

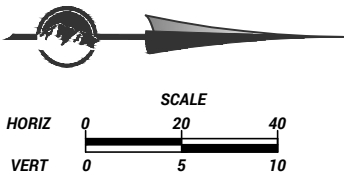
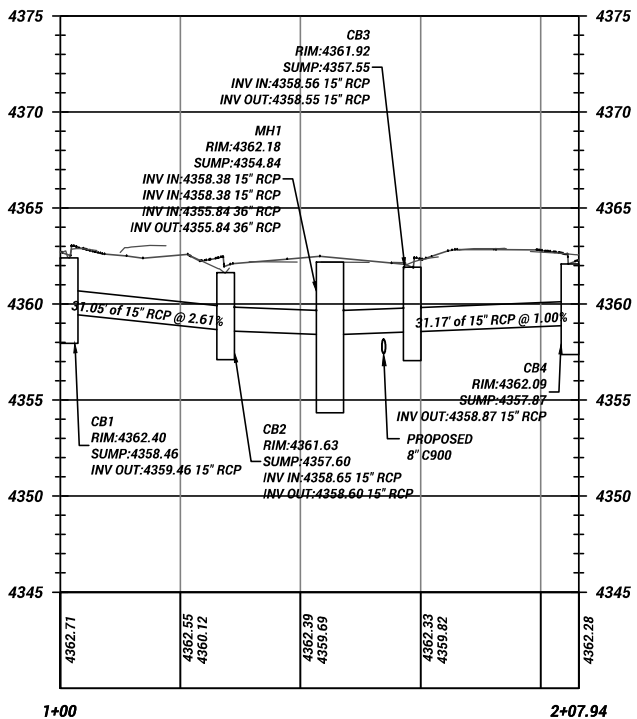




STORM DRAIN 675 (EAST SIDE)



STORM DRAIN 675 (WEST SIDE)



KEYED NOTES:

- 1 REMOVE AND REPLACE 30', TYPE "A" CONCRETE CURB AND GUTTER PER OGDEN STANDARDS.
- 2 REMOVE ASPHALT PAVEMENT
- 3 REMOVE FIRE HYDRANT ASSEMBLY. SALVAGE OLD FIRE HYDRANT TO OGDEN CITY WATER DEPARTMENT UPON REQUEST.
- 4 REMOVE VALVE BOX.
- 5 ROADBASE APWA (GRADE 1", 8" THICK) PER STD DWG RD-2
- 7 HMA T-PATCH PG 58-28 SP-1/2" CLASS II INSTALLATION, 6" THICK PER STD DWG RD-3. ENGINEER TO CONFIRM AND APPROVE MAXIMUM EXTENTS IN THE FIELD.
- 12 8" PVC C900 DR-18 WATER LINE
- 13 8" GATE VALVE (CLASS 250) PER STD DWG W-11, W-12
- 14 6" PVC C900 DR-18 WATER LINE
- 15 EXISTING WATER MAIN CONNECTION
- 16 FIRE HYDRANT ASSEMBLY PER OGDEN CITY STDS
- 17 1" AWWA C901 CTS POLY SERVICE LINE
- 18 1" WATER METER ASSEMBLY PER OGDEN CITY STDS
- 31 15" RCP STORM DRAIN CLASS V
- 32 PRECAST 2'x3' CATCH BASIN w/ CURB INLET
- 33 60" PRECAST STORM DRAIN MANHOLE
- 34 36" RCP STORM DRAIN CLASS III
- 35 27" RCP STORM DRAIN CLASS III
- 36 REMOVE STORM PIPE
- 37 REMOVE STORM JUNCTION BOX
- 38 PLUG/SEAL EXISTING STORM DRAIN CONNECTION

SD1

SHEET 6

0

REVISION

REV	DATE	DESCRIPTION
0	MM/DD/YY	DESCRIPTION

PROFESSIONAL ENGINEER  
No. 9000043-2003  
BRADEN C. SMITH  
5/17/2023  
STATE OF UTAH

DATE 5/18/2023

DRAWING SCALE  
H: 1" = 20' (22x34)  
V: 1" = 40' (11x17)  
1" = 5' (22x34)  
1" = 10' (11x17)  
This bar measures  
on the original  
drawing

DESIGNED B/M

DRAWN B/M

CHECKED TDN

STORM DRAIN 675 N

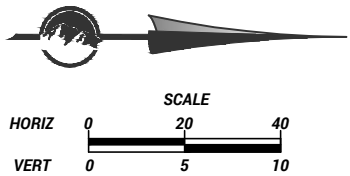
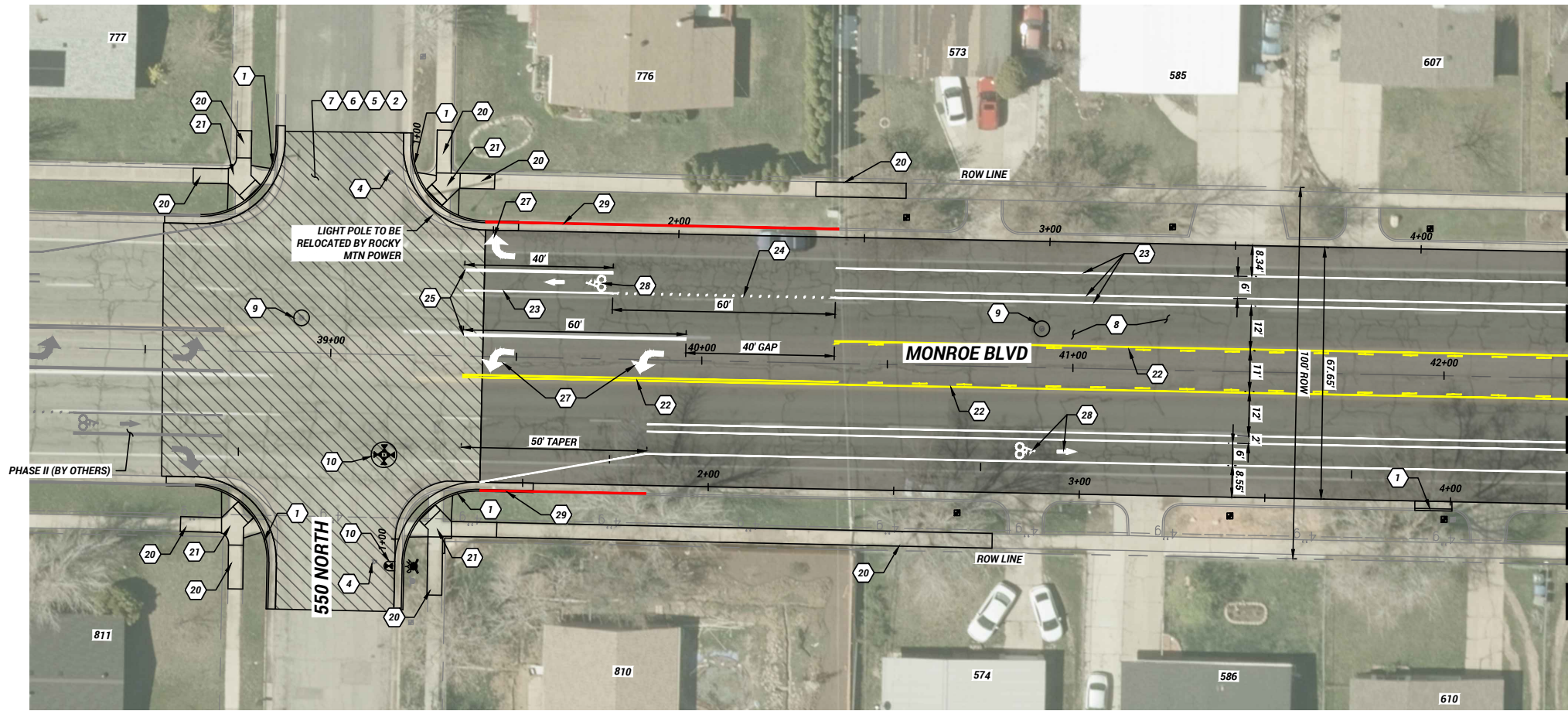
MONROE WATER LINE PH I

550 N TO 800 N

Ogden UTAH  
Still Untamed™  
2549 Washington Blvd, Suite 760 Ogden, UT 84401  
Phone: 801-629-9980 engineering.ogdencity.com

PLOT DATE: 6/2/2023 2:20 PM  
DRAWING NAME: Monroe SD1.dwg

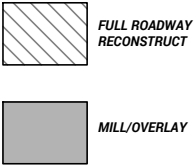
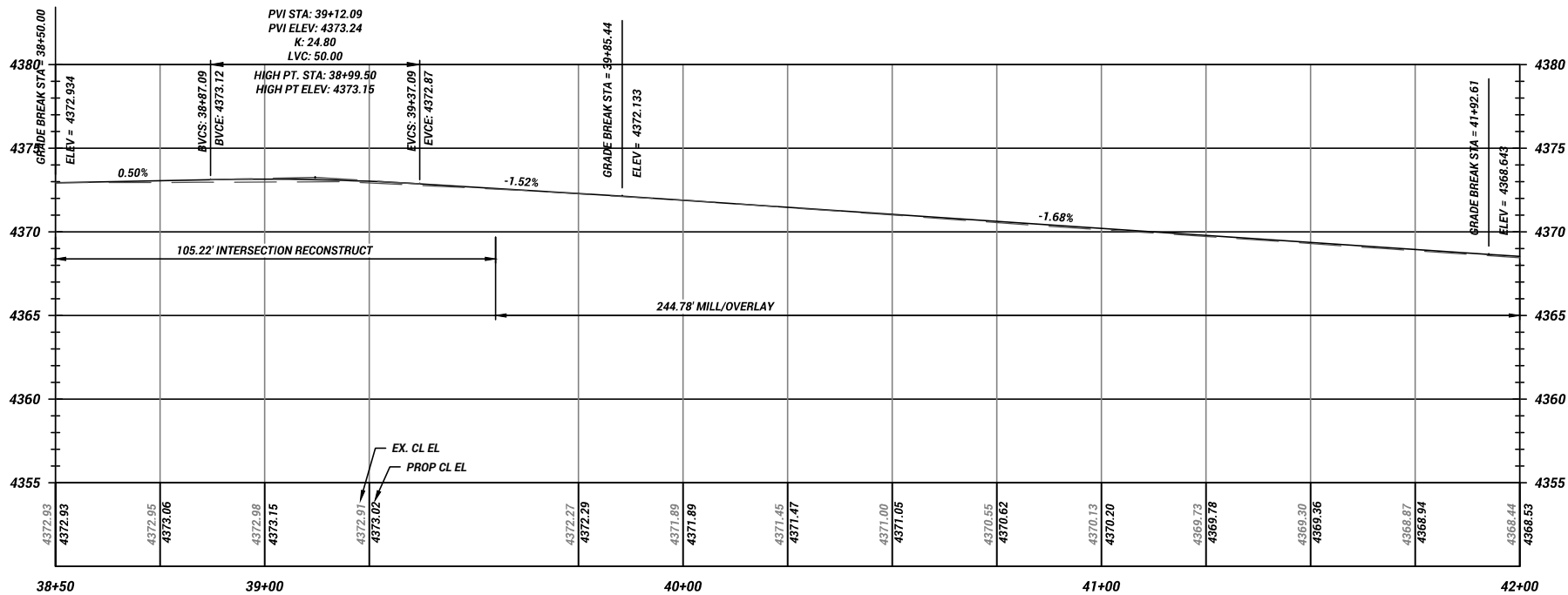




KEYED NOTES:

- 1 REMOVE AND REPLACE 30", TYPE "A" CONCRETE CURB AND GUTTER PER OGDEN STANDARDS.
- 2 REMOVE ASPHALT PAVEMENT
- 3 REMOVE HYDRANT ASSEMBLY
- 4 REMOVE VALVE BOX.
- 5 ROADBASE APWA (GRADE 1", 8" THICK) PER STD DWG RD-2, EXCAVATION INCLUDED
- 6 3" MINUS GRANULAR IMPORT BORROW (18" THICK, EXCAVATION INCLUDED)
- 7 HMA PG 58-28 SP-1/2" CLASS II INSTALLATION, 6" THICK PER STD DWG RD-3. ENGINEER TO CONFIRM AND APPROVE MAXIMUM EXTENTS IN THE FIELD.
- 8 2" MILL & OVERLAY (HMA PG 58-28 SP-1/2" CLASS II)
- 9 EXISTING MANHOLE - ADJUST TO GRADE
- 10 VALVE BOX - ADJUST TO GRADE
- 11 EXISTING SURVEY MONUMENT - ADJUST TO GRADE
- 19 REMOVE & REPLACE CONCRETE SIDEWALK 6" THICK (6" THICK BASE)
- 20 REMOVE & REPLACE CONCRETE SIDEWALK 4" THICK (4" THICK BASE)
- 21 REMOVE & REPLACE CONCRETE FLATWORK (PEDESTRIAN RAMP, DRIVEWAYS, 6" THICK OVER 6" THICK BASE)
- 22 PAVEMENT MARKING PAINT (4" YELLOW SKIPPED/SOLID LINE)
- 23 PAVEMENT MARKING PAINT (4" SOLID WHITE)
- 24 PAVEMENT MARKING PAINT (4" DOTTED WHITE)
- 25 PAVEMENT MARKING PAINT (8" SOLID WHITE)
- 26 PAVEMENT MARKING PAINT (12" SOLID WHITE)
- 27 PAVEMENT MESSAGE PAINT (RIGHT/LEFT TURN ARROW)
- 28 PAVEMENT MESSAGE PAINT (BIKE SYMBOL & ARROW)
- 29 RED CURB PAINTING

MONROE BLVD CENTERLINE PROFILE



- NOTES:
1. THE MILL/OVERLAY AND STRIPING WILL BE PERFORMED BY OTHERS AND NOT A PART OF THIS CONTRACT.
  2. SEE DETAIL A:DT1 FOR THE PAVEMENT SECTION FOR BOTH 550 N AND 675 N INTERSECTIONS.

RD1

SHEET 7

REVISION 0

REV	DATE	DESCRIPTION
0		INITIAL DESCRIPTION

DESIGNED

DRAWN

CHECKED

DATE

4/12/2023

B/M

B/M

TDN

DRAWING SCALE

H: 1" = 20' (22x34)

V: 1" = 40' (11x17)

H: 1" = 20' (22x34)

V: 1" = 5' (22x34)

H: 1" = 10' (11x17)

THIS BAR MEASURES THE ORIGINAL DRAWING

ROADWAY PLAN & PROFILE

MONROE WATER LINE PH I

550 N TO 800 N

2549 Washington Blvd, Suite 760 Ogden, UT 84401  
Phone: 801-629-8980 engineering.ogdencity.com

DRAWING NAME: Monroe RD1.dwg

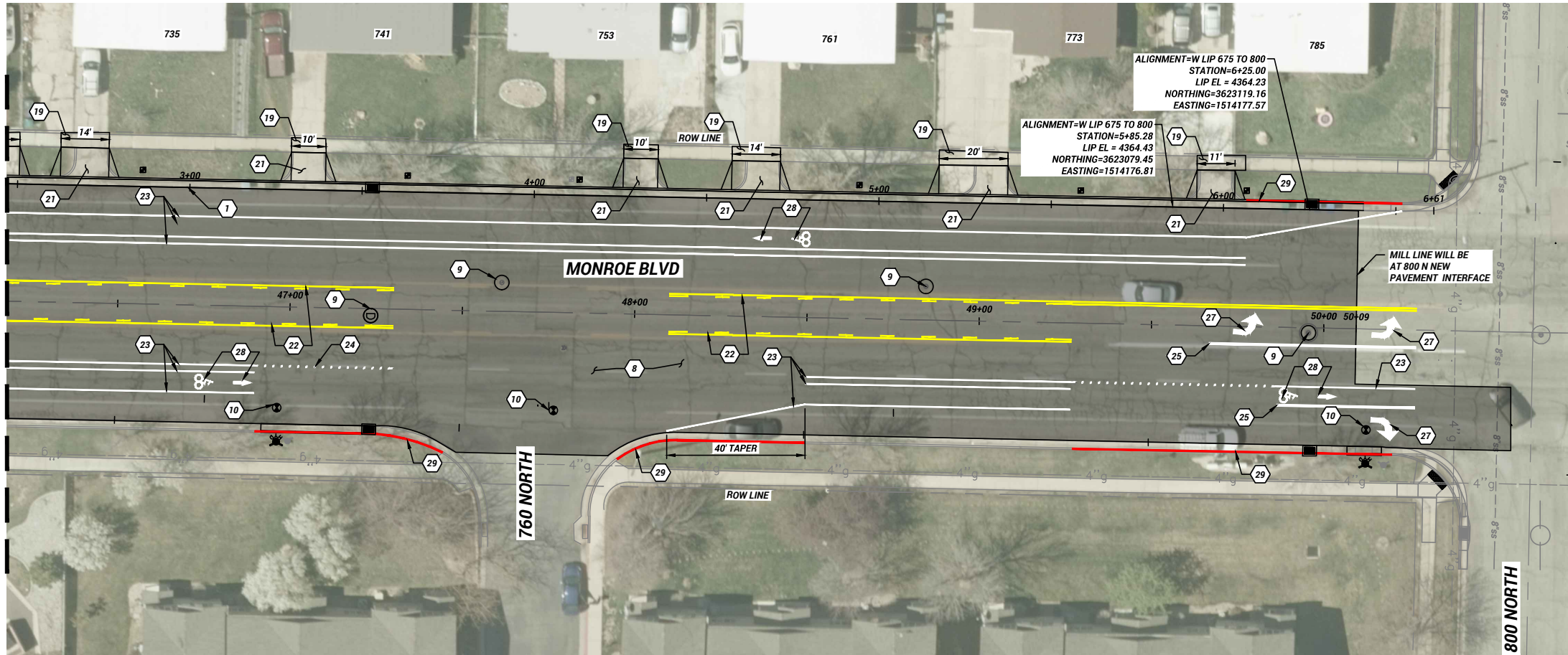
PLOT DATE: 6/2/2023 2:21 PM



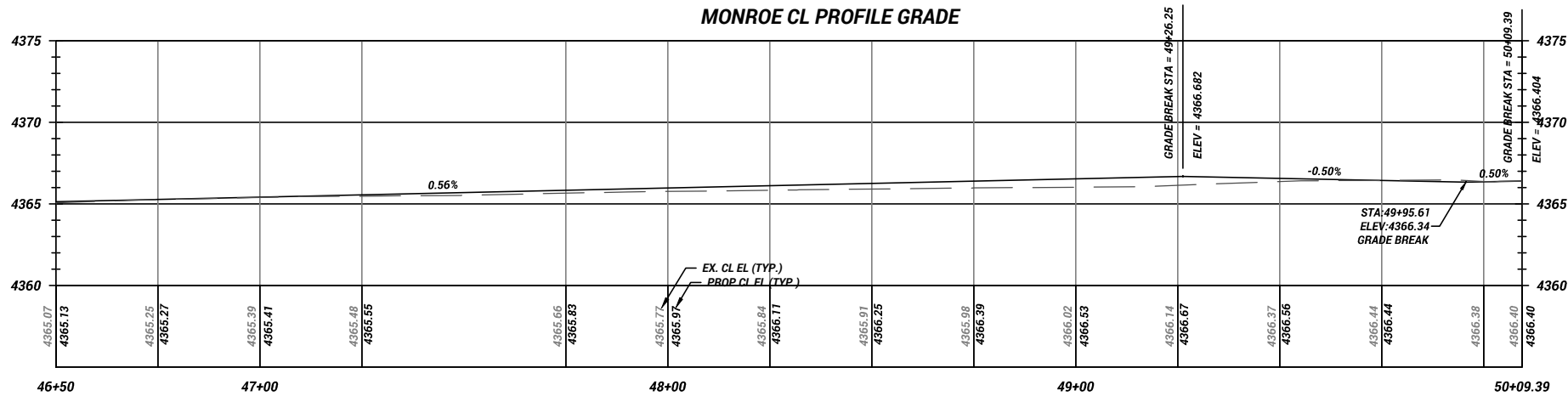




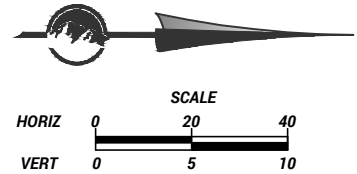
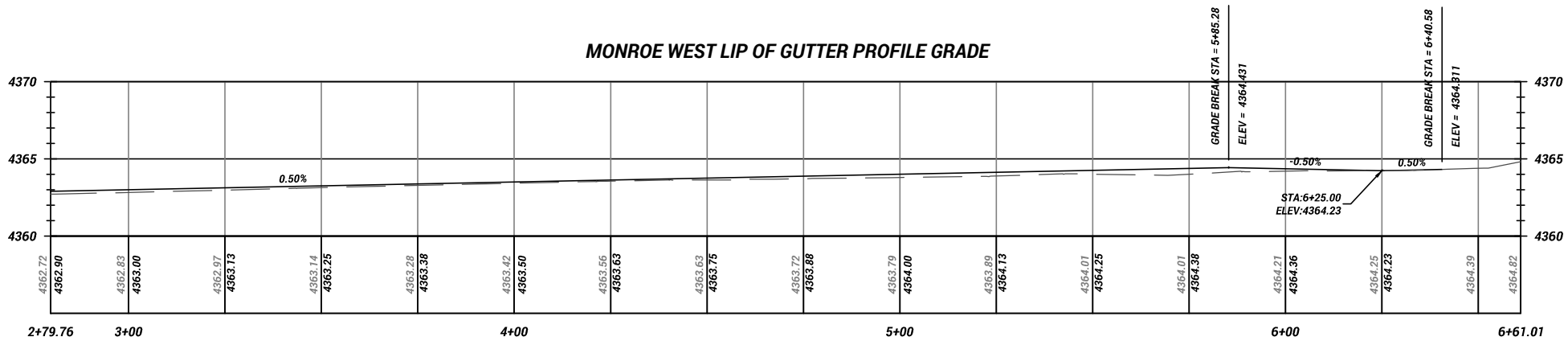
MATCH LINE SEE RD2



MONROE CL PROFILE GRADE

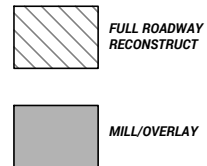


MONROE WEST LIP OF GUTTER PROFILE GRADE



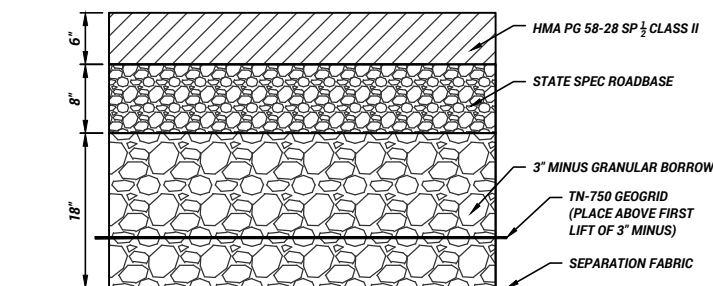
KEYED NOTES:

- 1 REMOVE AND REPLACE 30", TYPE "A" CONCRETE CURB AND GUTTER PER OGDEN STANDARDS.
- 2 REMOVE ASPHALT PAVEMENT
- 3 REMOVE HYDRANT ASSEMBLY
- 4 REMOVE VALVE BOX.
- 5 ROADBASE APWA (GRADE 1", 8" THICK) PER STD DWG RD-2, EXCAVATION INCLUDED
- 6 3" MINUS GRANULAR IMPORT BORROW (18" THICK, EXCAVATION INCLUDED)
- 7 HMA PG 58-28 SP-1/2" CLASS II INSTALLATION, 6" THICK PER STD DWG RD-3. ENGINEER TO CONFIRM AND APPROVE MAXIMUM EXTENTS IN THE FIELD.
- 8 2" MILL & OVERLAY (HMA PG 58-28 SP-1/2" CLASS II)
- 9 EXISTING MANHOLE - ADJUST TO GRADE
- 10 VALVE BOX - ADJUST TO GRADE
- 11 EXISTING SURVEY MONUMENT - ADJUST TO GRADE
- 19 REMOVE & REPLACE CONCRETE SIDEWALK 6" THICK (6" THICK BASE)
- 20 REMOVE & REPLACE CONCRETE SIDEWALK 4" THICK (4" THICK BASE)
- 21 REMOVE & REPLACE CONCRETE FLATWORK (PEDESTRIAN RAMP, DRIVEWAYS, 6" THICK OVER 6" THICK BASE)
- 22 PAVEMENT MARKING PAINT (4" YELLOW SKIPPED/SOLID LINE)
- 23 PAVEMENT MARKING PAINT (4" SOLID WHITE)
- 24 PAVEMENT MARKING PAINT (4" DOTTED WHITE)
- 25 PAVEMENT MARKING PAINT (8" SOLID WHITE)
- 26 PAVEMENT MARKING PAINT (12" SOLID WHITE)
- 27 PAVEMENT MESSAGE PAINT (RIGHT/LEFT TURN ARROW)
- 28 PAVEMENT MESSAGE PAINT (BIKE SYMBOL & ARROW)
- 29 RED CURB PAINTING

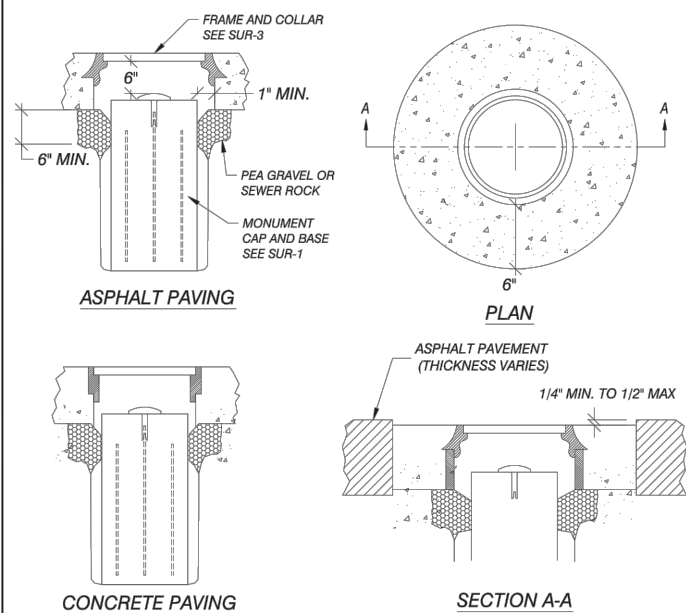
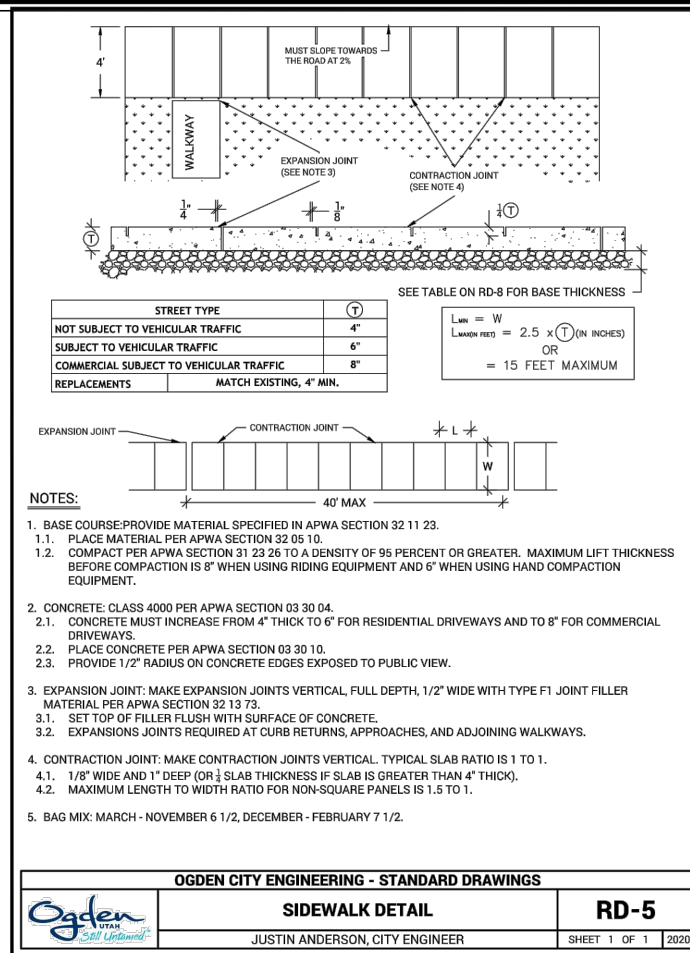
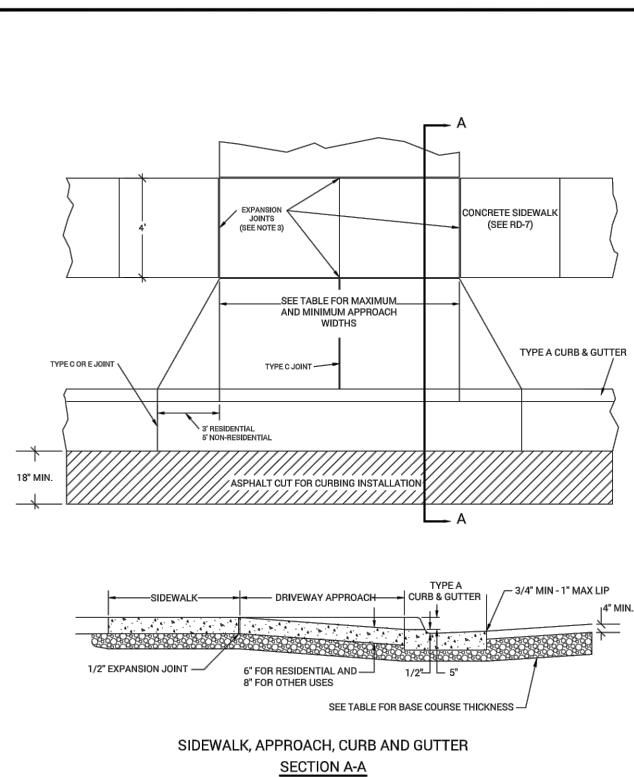
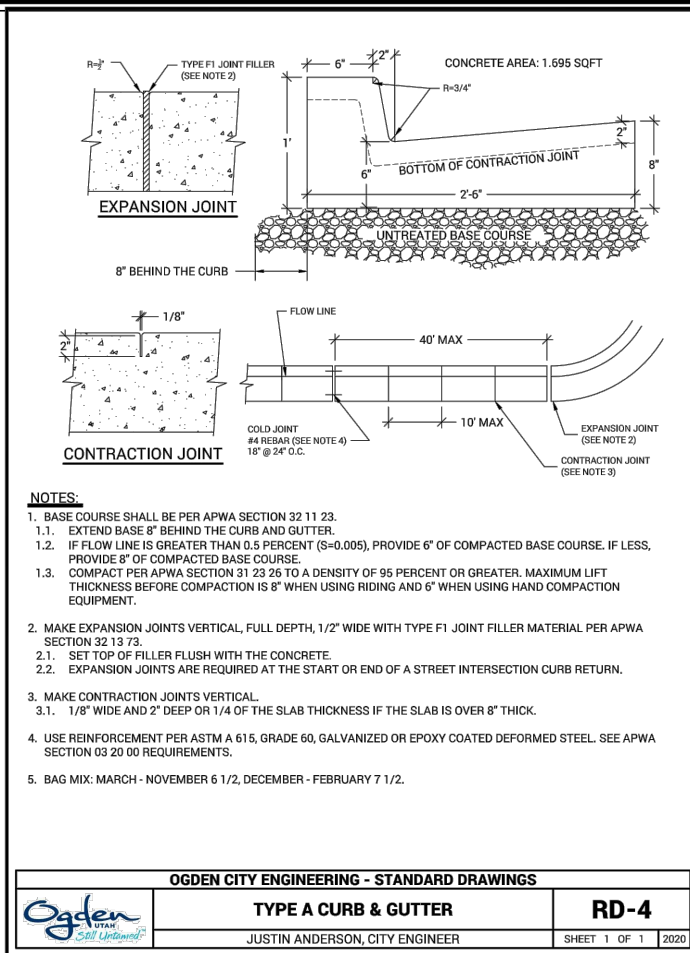


ROADWAY PLAN & PROFILE  
MONROE WATER LINE PH I  
550 N TO 800 N





**A** **DETAIL - 550 N & 675 N INTERSECTION PAVEMENT SECTION**  
**DT1** *NTS*



**NOTES:**

1. BACKFILL: INSTALL AND COMPACT BACKFILL MATERIAL PER APWA SECTION 32 05 10.
2. FOUNDATION: COMPACT BOTTOM OF EXCAVATED HOLE BEFORE PLACEMENT OF PRECAST OR CAST IN-PLACE MONUMENT POST.
3. CONCRETE: CLASS 4000 PER APWA SECTION 03 30 04.
4. JOINTS: PROVIDE A VERTICAL JOINT BETWEEN EXISTING AND NEW SURFACES. PROVIDE A CONCENTRIC CIRCLE CUT.
5. THE SURVEY MONUMENT BASE CONCRETE SHALL BE POURED SEPARATELY FROM THE FRAME AND COVER COLLAR CONCRETE.





